




**ACTREG**

POWER IN AUTOMATION

A worker wearing a white hard hat and a high-visibility safety vest is shown in profile, writing on a clipboard. The background is a blurred industrial setting with large machinery and pipes. The image has a color gradient from red on the left to blue on the right. Two horizontal red lines are positioned above and below the text.

**We are specialized  
in the manufacture  
of high quality  
actuators**



**ACTREG**, established in 1992, is a multinational company specializing in the manufacture and sales of high quality actuators for industrial valves for either On/Off or modulating duty.

The expertise and know how has made **ACTREG** leader in actuation technology.

**ACTREG** provides world coverage thanks to the strategic locations of its factories and offices.

The international distribution network ensures quick availability and more important, personalized service for valve manufacturers, valve stocking distributors and contractors.



## Power in automation

---

ESTABLISHED IN  
**1992**

---

INTERNATIONAL  
**Distribution**

---

DESIGN &  
**Quality**

---

LEADERS IN  
**Technology**

---

PERSONALIZED  
**Service**

We are a manufacturer of rack and pinion aluminium housing actuators with torque figures up to 6.500 Nm and scotch yoke actuators for heavy duty service up to 700.000 Nm. Our products offer reliable and dependable automation for industrial valves.



The precision in design and quality provides a long and safe operational performance in valve control.



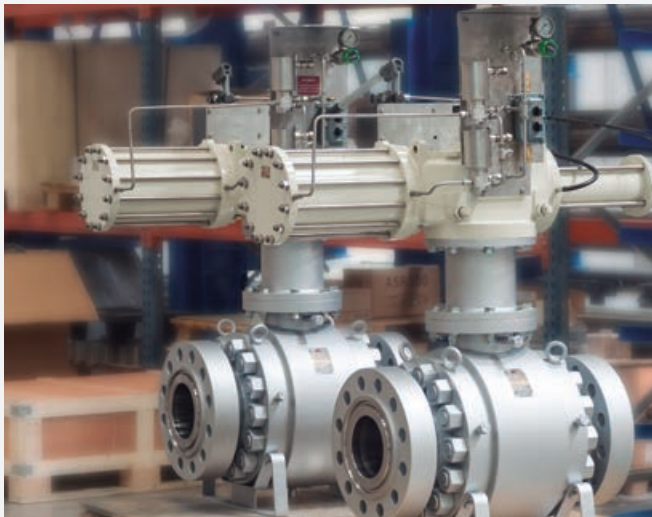
**ACTREG** has invested in quality assurance, state-of-the-art machining and testing facilities in order to assist customers in safely controlling their processes.



**ACTREG** engineers are happy to help you with your automation requirements.

## OUR MISSION

Is to be the world's most reliable company in actuators management through our industry expertise, innovative solutions and community commitment.



## RACK AND PINION Aluminium housing

TORQUES UP TO  
**6.500 Nm**

ACTUATORS IN  
**14 different sizes**

## SCOTCH YOKE Heavy duty service

TORQUES UP TO  
**700.000 Nm**

ACTUATORS IN  
**29 different sizes**

## CERTIFICATES

**ACTREG S.A.U.** has a Quality Management System certified in accordance with the requirements of ISO 9001:2015 for the design, development, manufacturing and distribution of pneumatic actuators and accessories for valves.

All our actuators are certified according to latest standard of Pressure Equipment Directive (PED 2014/68/EU).

All **ACTREG** actuators are classified for use in potentially explosive atmospheres as Group II Category 2, suitable for zones 1, 2, 21 and 22 in accordance with directive 2014/34/EU "ATEX".

All **ACTREG** actuators are tested and certified according to IEC61508:2010 and have a SIL3 capability. In addition, we can supply the final elements loops for SIF, with a full SIL calculations including valves and ancillaries, so we can provide a SIL certificate for the complete final element units.

TR-CU (Technical Regulations of Customs Union) certificates for Eurasian countries (EAC).

TYPE approval for Pipping systems offshore standard, marine and machinery systems and equipment.



# ACTREG PRODUCTS



## RACK & PINION

Compact pneumatic actuators

Aluminium housing

Rack and pinion design

Up to 6.500 Nm

ATEX | CE-PED | VDI/VDE 3845 | ISO 5211 | SIL3 | EN-15714 | Type Approval



## SY SERIES

Heavy duty applications

Hydraulic or pneumatic actuators

Scotch yoke design

Up to 700.000 Nm

Modular design

ATEX | CE-PED | VDI/VDE 3845 | ISO 5211 | SIL3 | EN-15714 | Type Approval



## SK SERIES

Compact pneumatic actuators

Scotch yoke design

Steel construction

Namur connection for solenoid valves

ATEX | CE-PED | VDI/VDE 3845 | ISO 5211 | SIL3 | EN-15714 | Type Approval



## LINEAR PISTON ACTUATORS

Steel actuators for heavy duty applications

Hydraulic or pneumatic

Up to 400.000 N

Spring return or double acting

ATEX | CE-PED



## LIMIT SWITCH BOXES

Mechanical switches or inductive switches

Inductive switches for direct mounting

ATEX execution



## DECLUTCHABLE GEAR BOXES

Aluminium Housing

Sealed to IP-65

ACTREG's Actuators direct mounting

Compact design-low weight

Double adjustment stroke



## BRACKETS AND COUPLINGS

Stainless steel, carbon steel or other materials upon request

Machined for every kind of valve



## PNEUMATIC CONTROL DESIGNS

Solenoid valves, filters, quick exhaust valves, tubing, regulators...

Line Break systems

Emergency shut down systems

Design and manufacturing control cabinets



## SPECIAL ACTUATORS

Fire-proof

Fast acting actuators

100% adjustment stroke actuators

Special coatings

Locking device



## AIR RESERVOIRS

Up to 3.000 Liters

PED or "U" stamp

Carbon steel, stainless steel, special alloys



For further information visit our website  
**[www.actreg.com](http://www.actreg.com)**



**ACTREG, S.A.U. (Headquarters)**

Carrer de l'Energia, 15-25, naves 1-2  
Pol. Ind. Barnasud  
08850 Gavà  
Barcelona (Spain)  
Phone +34 936 614 410  
[actreg@actreg.com](mailto:actreg@actreg.com)

**ACTREG do Brasil, Sorocaba (SP)**

Avenida Liberdade, 4565  
Bairro Iporanga - Sorocaba - SP  
CEP 18.087-170  
Sao Paulo, Brasil  
Phone: 0055 15 3228 1010  
[actreg@actregdobrasil.com.br](mailto:actreg@actregdobrasil.com.br)

**ACTREG UK, LTD**

Units 2 & 3 Henson Close  
Telford Way Industrial Estate  
Kettering Northants NN 16 8PZ  
United Kingdom  
Phone: 0044 1536412525  
[sales@actreg.co.uk](mailto:sales@actreg.co.uk)

**ACTREG Shanghai Actuator Co. Ltd.**

No. 125, Ji Ye Road  
SheShan Industrial Zone  
Songjiang District, Shanghai, China  
P.R.C. 201602  
Phone: +86 21 57796818  
[sale@actreg.net.cn](mailto:sale@actreg.net.cn)

**ACTREG North America**

20675 Boul. Industriel  
Ste. Anne-de-Bellevue, Québec  
H9X 4B2 Canada  
Toll Free: 1 800 667 4819  
Phone: 001 514 457 5777  
[trueline.sales@trueline.ca](mailto:trueline.sales@trueline.ca)